



Water spray systems

*Cool down.  
Fire Protection by*

**MINIMAX**

# PRODUCT

## Extinguishing with water

Every year, fires cause huge damage and cost the economy billions of Euro. A special fire hazard is caused by substances that are highly flammable which are likely to cause a very quick fire spreading. In such cases, conventional sprinkler systems may not be activated quickly enough to provide adequate protection. With such risks water spray systems – a combination of fire detection and water extinguishing system – are used.

Minimax water spray systems detect a fire particularly fast and cover the area with a water spray at the same time over all nozzles in the extinguishing area. A large volume of water is thus released and sprayed evenly over an extended area within a very short period of time. This approach ensures that fires in rooms with flammable goods can be extinguished quickly and with minimum damage.

Minimax water spray systems are designed according to the individual needs of our customers and the fire protection requirements at the site, taking into account the actual fire load, structure of the building or the protected object. For special risks spray water fire extinguishing systems can be equipped also with foam proportioners for foam concentrates.

Generally, the costs of a water spray system amount only to a fraction of the overall construction costs of the building especially, if the extinguishing system is incorporated into the building project during the planning phase. Thanks to its many years of experience as certified installation company Minimax can further offer water spray systems for retrofit installation at a very competitive price.

Minimax water spray systems protect your company against the devastating effects of a fire, as such events generally lead to a long standstill. By installing a well-designed and effective fire protection system, you let your customers know that reliability and safety are among your top priorities.



Minimax has over 100 years of experience in the development, production, installation and maintenance of fire protection solutions. Its high-quality products are being continuously developed and improved to suit customers needs.

# APPLICATION

## Fast response effective fire fighting.

### Minimax water spray systems have crucial advantages:

- ▶ Extinguishes fires quickly and prevents fires from spreading over a large area.
- ▶ Minimises the damage caused by fire and reduces downtimes, protects the future of your business.
- ▶ High flexibility in design and implementation
- ▶ Reduces fumes and binds contaminants.
- ▶ Allows large open areas and thus a more flexible use of the premises.
- ▶ Uses water, a natural fire extinguishing agent that is available in unlimited quantities at a very low price.
- ▶ After a fire, the Minimax water spray system is quickly restored to ready mode.

Minimax water spray systems are used to protect rooms and objects and are suitable for indoor and outdoor installation. Water spray systems are the preferred solution for the protection of objects requiring preventive cooling or quick fire suppression, such as:

- ▶ Power plants and waste-to-energy (WTE) power plants
- ▶ Oil refineries and fuel tanks
- ▶ Transformers
- ▶ Facades
- ▶ Cable channels
- ▶ Recycling plants
- ▶ Waste incineration plants
- ▶ Paint shops
- ▶ Theatres
- ▶ Mining
- ▶ Airports
- ▶ Conveyor belts, loading and unloading stations



The profound knowledge and correct application of relevant guidelines, the use of the approved products as well as qualified personnel for design and installation guarantee your safety.

# FUNCTION

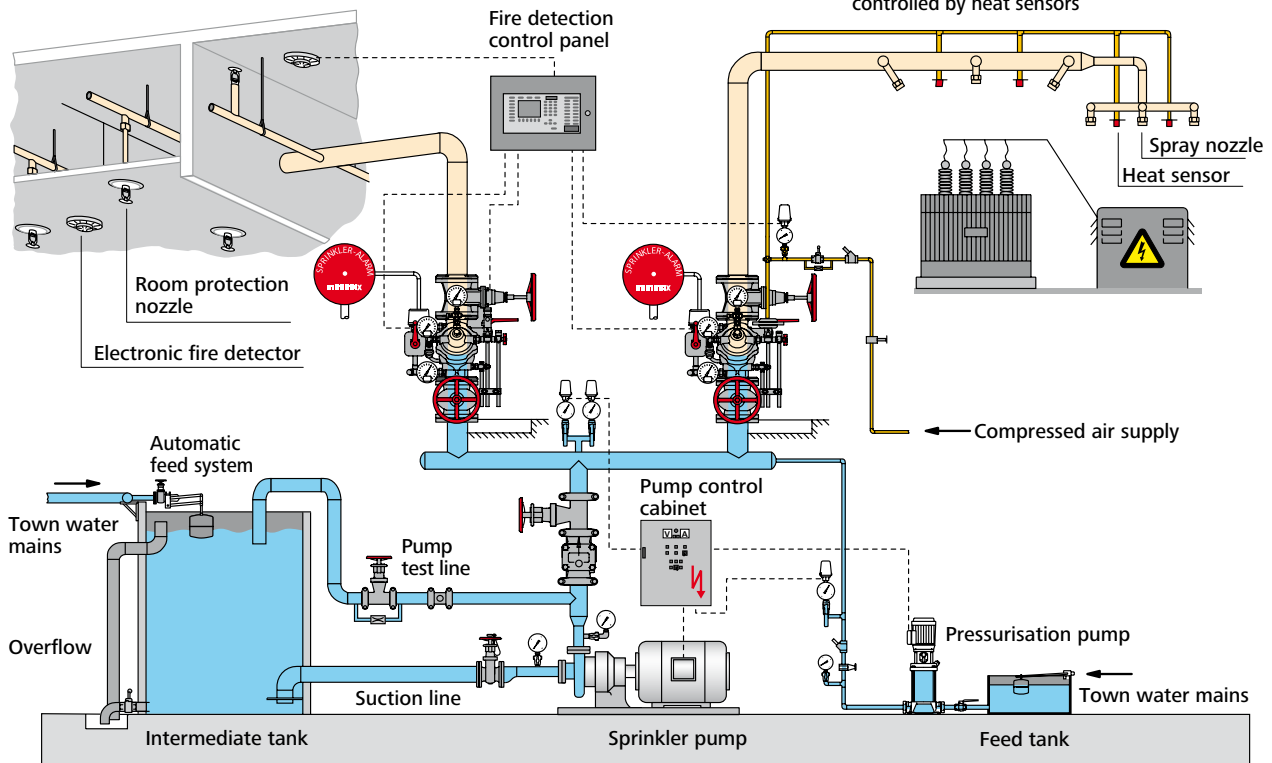
## Water spray systems

### Room protection

e.g. electronically triggered and controlled by fire detectors

### Object protection

e.g. pneumatically triggered and controlled by heat sensors



All sections of the building that are to be protected are equipped with a pipe system with open extinguishing nozzles which are divided into several extinguishing areas. In ready mode, all piping up to the deluge valves is filled with water. The system includes fire detectors elements which, depending on the site conditions and the risk, are operated electrically, pneumatically, hydraulically or manually. As soon as a fire is detected, the corresponding deluge valves are

opened. The water is sprayed only from all nozzles within the extinguishing area, extinguishing flames and absorbing heat and cooling the material on fire.

Minimax water spray systems with electronic control can be stopped manually by means of remote control (optional) so that the water flow can be stopped as soon as the fire is extinguished, preventing unnecessary damage.



Minimax GmbH & Co. KG  
Industriestrasse 10/12  
D-23840 Bad Oldesloe  
Phone: +49 (0) 45 31 8 03-0  
Fax: +49 (0) 45 31 8 03-248  
E-Mail: [water@minimax.de](mailto:water@minimax.de)  
[www.minimax.de](http://www.minimax.de)



Right reserved to make technical changes.  
Detailed information can be found in the appropriate technical data sheets.