

## Filling and drainage station FSX LWT

*Cool down.  
Fire Protection by*

**MINIMAX**

### ► Product ► Application + Advantages

- In the case of „wet/dry“ extinguishing systems with wall hydrants the piping is drained, and it is only filled with extinguishing water when needed.

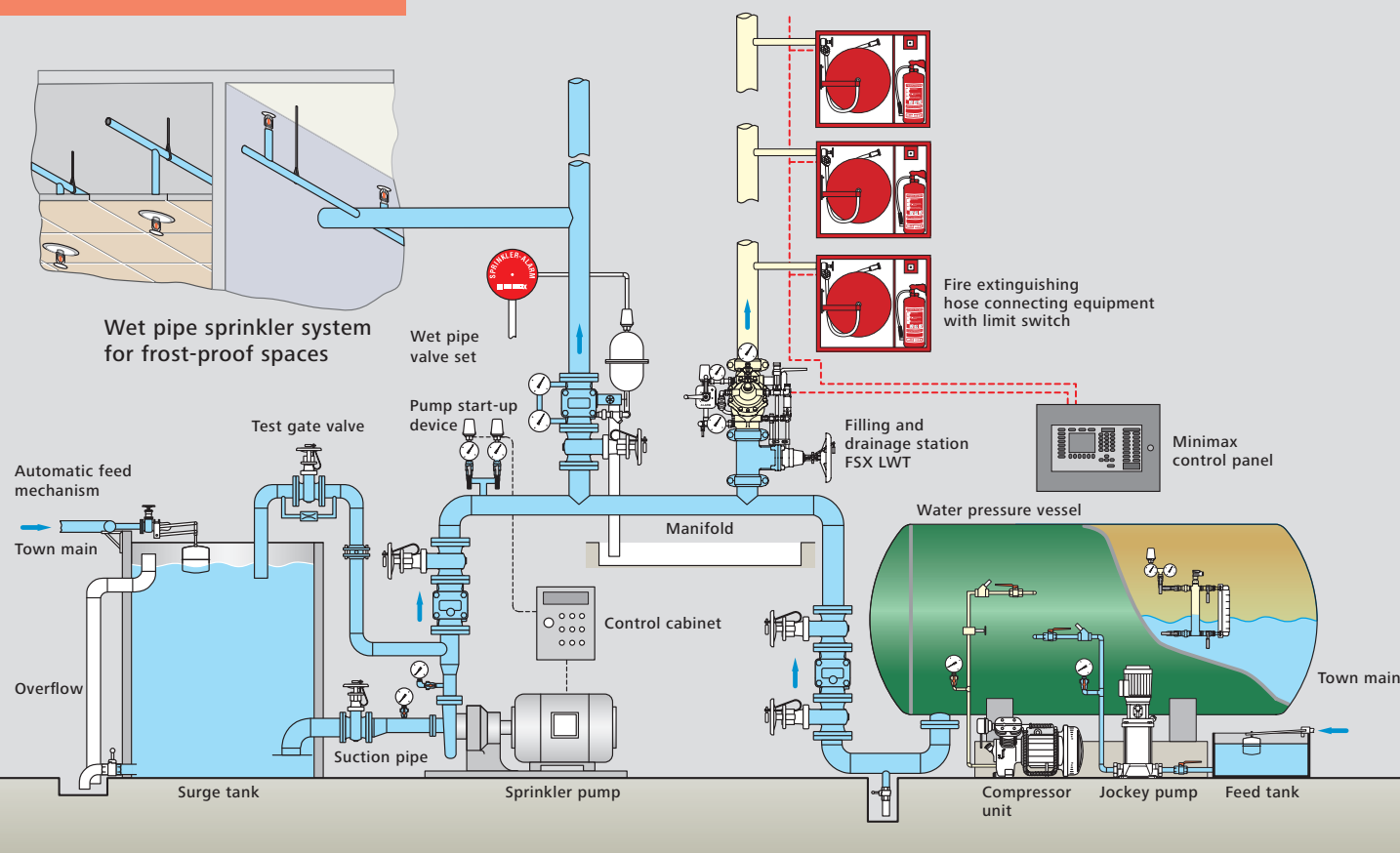
If the water supply is provided by a sprinkler system or a feed tank, the wall hydrant system can be put into operation and drained afterwards by means of the filling and drainage station FSX LWT.

When actuating the hose connection valve of a wall hydrant (extinguishing water request) the filling and drainage station is activated with a Minimax control panel to ensure the availability of extinguishing water at every wall hydrant. After termination of the extinguishing water request (closure of the last hose connection valve of a wall hydrant) the extinguishing water conduit drains automatically by means of the filling and drainage station.

- The FSX LWT can be used in the scope of a new installation as well as for system separation of existing extinguishing water systems according to DIN 14462.
- Typical areas of application are:
  - parking garages
  - outdoor areas
  - underground parking
  - storage areas
  - public areas, e.g. railway stations
  - other areas threatened by frost
- Application in conjunction with a pressure booster or a sprinkler system.

- + Pre-installed trimming ensures fast assembly
- + Cost savings when using the existing water supply of a sprinkler system
- + The hydraulically construction of the fitting guarantees high flow rates with low loss of pressure
- + Its compact built requires less space
- + High maintainability due to easy accessibility of all armatures
- + Suitability in terms of fire protection by construction according to VdS standards
- + Low-priced because no DVGW certification is required
- + Factory-checked functions and pressure of the station
- + Electric supervision of station

## Function diagram



## Function

- ▶ The filling and drainage station FSX LWT is actuated by means of a Minimax control panel, such as the FMZ 5000 mod S, which activates the solenoid valve for activation and the solenoid valve for drainage at the station when the hose connection valve in a wall hydrant is activated. The solenoid valve for drainage closes and the solenoid valve for activation opens; this leads to a loss of pressure in the control chamber of the valve, the valve opens and the hydrant piping network is flooded.

After the last hose connection valve is closed, the solenoid valve for activation closes, and the hydrant piping network is drained by opening the solenoid valve for drainage. During operational readiness the solenoid valve for drainage remains open.

The control panel can transmit an electric alarm to a permanently manned location.

## Scope of delivery

- ▶ Fully factory pre-assembled filling and drainage station FSX LWT, including gate valve and electric monitoring.

## Accessories

- ▶ Minimax control panel, e.g. FMZ 5000 mod S
- ▶ Limit switch for hose connection valves
- ▶ Drain unit EV10 for low point drain

## Technical data

Available nominal widths:	DN 50, DN 80, DN 100
Connection variants:	pipe coupling or flange
Operating pressure:	max. PN 16
Activation:	electric, 24 V DC 2/2-way solenoid valve
Alarm	potential-free contacts
Alarm (pressure switch PMA-3):	1 opener, 1 closer
	ampacity 6 A–250 V AC, 5 A–24 V DC

Operating temperature:	max. 60 °C
Equivalent lengths:	DN 50 – 3.1 m (pipe 60.3 x 2.0) DN 80 – 7.1 m (pipe 88.9 x 2.9) DN 100 – 12 m (pipe 114.3 x 3.2)

Detailed information can be found in the appropriate technical data sheets.

Technical alterations reserved.

Minimax GmbH  
Industriestraße 10/12  
23840 Bad Oldesloe  
Germany  
Phone +49 4531 803-0  
Fax +49 4531 803-248  
E-mail [water@minimax.de](mailto:water@minimax.de)  
[www.minimax.com](http://www.minimax.com)

